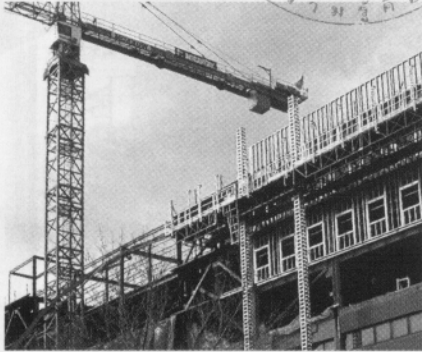


OCTOBER 2003

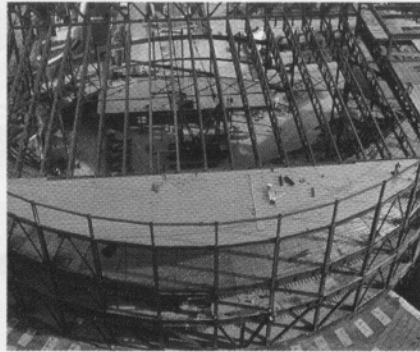
28 OCT 2003



modern
Steel
construction



31



39



53

FEATURES

- 22** SteelWise: The One-Third Stress Increase—Where is it now?
Keith Mueller, Ph.D. and Charles J. Carter, P.E., S.E.
- 31** Dream Team
Beth S. Pollak
- 39** Steel Wins Big
Wayne Searle
- 45** No Good Deed Goes Unpunished
John Cross, P.E. and Joseph Jun
- 53** 3 Schools + 2 Years = 1 Team
Edward E. Garvin, P.E. and Beth S. Pollak
- 61** Blast Resistant Design with Structural Steel
Anatol Longinow, Ph.D. and Farid Alfawakhiri, Ph.D.

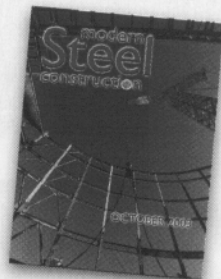
Teamwork!

DEPARTMENTS

- 6** Notes from the Editor
- 9** Steel Interchange
- 13** Steel Quiz
- 17** Steel News & Events
- 21** Correspondence
- 68** Welding and Bolting Product Highlights
- 72** Advertisers' Index
- 73** Steel Marketplace

ON THE COVER

Steel was the material of choice for the new Colosseum at Caesars Palace in Las Vegas. Read more on page 39.



Modern Steel Construction (Volume 43, Number 10). ISSN 0026-8445. Published monthly by the American Institute of Steel Construction, Inc., (AISC), One E. Wacker Dr., Suite 3100, Chicago, IL 60601-2000. SUBSCRIPTIONS: Within the U.S.—single issues \$3.50; 3 years \$85. Outside the U.S.—single issues \$5.50; 1 year \$36; 3 years \$100. Periodicals postage paid at Chicago, IL and at additional mailing offices. POSTMASTER: Please send address changes to Modern Steel Construction, One East Wacker Dr., Suite 3100, Chicago, IL 60601-2000.

AISC, Inc. does not approve, disapprove or guarantee the validity or accuracy of any data, claim or opinion appearing under a byline or obtained or quoted from an acknowledged source. Opinions are those of the writers and AISC is not responsible for any statement made or opinions expressed in *Modern Steel Construction*.